



Visitor Safety

Welcome to OYO Geospace Houston

Health, safety and environmental protection are core values of our company. To help ensure you a safe visit today, please carefully review and follow the policies, procedures and emergency information in this document.

FACILITY SAFETY RULES

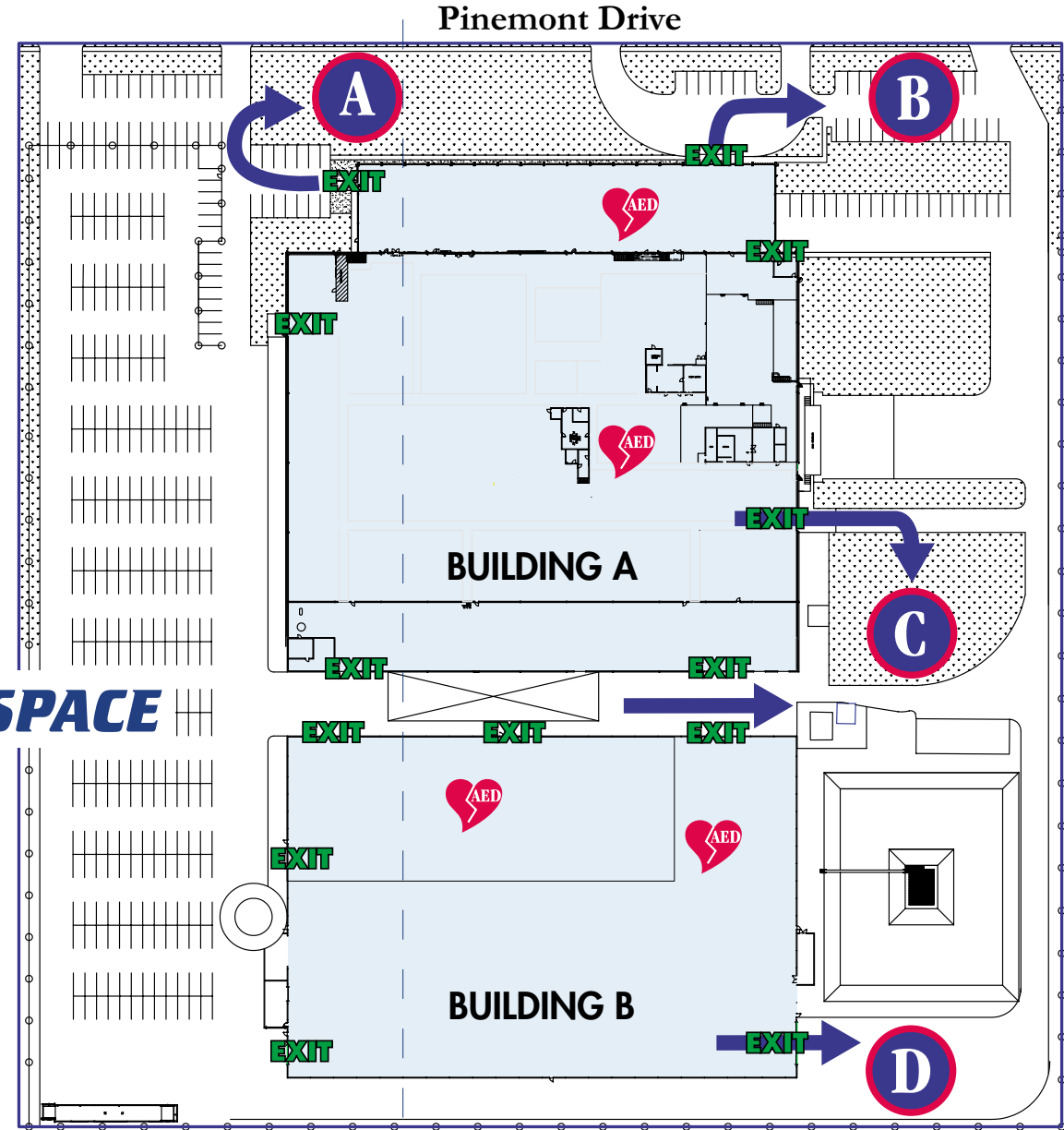
1. Stay on the **yellow** and **red** walkways: remain on the designated main **yellow** walkways or restricted **red** flow lanes at all times during your visit.
2. Wear personal protective equipment: personal protective gear such as safety glasses and/or steel-toed shoes are required in some areas. The receptionist in the front lobby can provide you with visitor safety glasses, and some department supervisors can provide you with slip-on toe covers if needed. If you stay only on yellow walkways, you will typically not need these items.
3. Obey all signs.
4. No smoking.
5. Report all injuries or near-misses to your OYO Geospace contact.
6. Cell phone use is prohibited in the production area.

MANUFACTURING AREA RULES

1. Wear safety glasses with side shields: ANSI Z87.1 approved safety glasses are required at all times when in shop areas. Visitor safety glasses can be obtained in the front lobby or from your escort.
2. No shorts are allowed.
3. Wear appropriate footwear: wear only hard-soled, non-canvas shoes with closed toes and heels on the yellow walkways. Steel-toed footwear is required in the machine and cable shop areas.
4. Use hearing protection (available from your escort).
5. Be aware of metal shavings around machines.
6. Stay alert for forklift traffic.

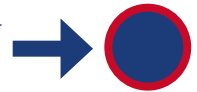
OYO GEOSPACE

7007 Pinemont
Houston, TX 77040
713-986-4444



Automated
External
Defibrillator

Emergency
Muster
Areas



HEALTH, SAFETY & ENVIRONMENTAL PROTECTION POLICY

OYO GEOSPACE

*is committed to achieving
excellence in health, safety and
environmental protection.
It is the responsibility of both
management and associates
to operate safe, clean and
efficient facilities in an
environmentally and socially
responsible manner.*

POLICY OBJECTIVES

- Provide all associates with a safe and healthful workplace.
- Communicate health, safety and environmental concerns regarding our operations and products to our employees, contractors and the public.
- Provide our customers with the information necessary to handle and manage products safely.
- Comply with applicable health, safety and environmental laws, regulations and company standards.
- Ensure that all managers, employees and contractors are aware of this policy and have been trained on their specific responsibilities for health, safety and environmental protection.
- Maintain open communication with the public with regard to our implementation of this policy.

POLICY IMPLEMENTATION

- Establish a procedure for identification and periodic reviews of HSE goals and targets for achieving the objectives of this policy.
- Develop and implement corporate standards and guidelines to assure that each policy is maintained and followed.
- Develop and implement safety procedures consistent with this policy along with applicable corporate standards and guidelines.
- Ensure that adequate resources are dedicated to implement effectively all aspects of this policy.
- Utilize HSE auditing to evaluate compliance with this policy.
- Continuously improve our HSE programs through evaluation, review and implementation of appropriate corrective and preventive actions.

OYO GEOSPACE

Geospace Technologies
Geospace Offshore
Geospace Engineering Resources International
OYO Instruments

7007 Pinemont, Houston, TX 77040

www.oyogeospace.com

713-986-4444 Fax: 713-986-4445